

PARENT SUPPORT ADVISOR

*Supporting you to raise
your child's achievement*



Working across the Stourbridge Learning Partnership are four Parent Support Advisors (PSAs) whose role is to offer help and information to parents, carers and families.

Every family is different, so too are your individual needs. PSAs will assist you, in a friendly approachable manner, with the best interests of your family in mind.



PSAs provide free, impartial advice and information to parents and carers with children within our schools.

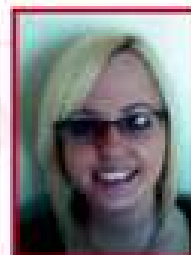
We can offer help with issues such as:

- ◆ Individual Education Plans
- ◆ Special Educational Needs
- ◆ Gifted and Talented Provision
- ◆ School Attendance Issues
- ◆ School Admissions
- ◆ Self Esteem
- ◆ Activities for families
- ◆ Community Events
- ◆ Behaviour Management
- ◆ Family Learning
- ◆ Starting School and Moving On
- ◆ Support Groups, Drop-ins, Parent Carer and Child Groups



- ◆ Health and Well Being
- ◆ Housing
- ◆ Benefits
- ◆ Childcare
- ◆ Local Adult Learning Sessions (English for speakers of other languages, numeracy, literacy and computer skills.)
- ◆ Employment Advice
- ◆ After School Clubs

Your Parent Support Advisor is Sarah Price.



She is working with parents and carers in the following cluster of schools:

*Hob Green Primary
Redmore Technology College & Community School
Rufford Primary
Wollescote Primary*

*Address: The Butterfly Children's Centre
Lye Bypass, Lye DY9 8HT.*

Telephone: 07827 873274 or 01384 813954

Email: psa@rufford.dudley.sch.uk

or contact us through your child's school.



Please let us know if there are any other ways in which we can support you.

Your Parent Support Advisor is Anna Massey.



She is working with parents and carers in the following cluster of schools:

*Brierley Hill Primary
Mount Pleasant Primary
Peter's Hill Primary
Quarry Bank Primary
St. Mary's Catholic Primary
Thorns Community College
Thorns Primary
Withymoor Primary*

*Address: Quarry Bank Children's Centre,
Quarry Bank Primary School, High Street, Quarry Bank,
Brierley Hill DY5 2AP.*

Telephone: 07827 873275 or 01384 817954

Email: psa@rufford.dudley.sch.uk

or contact us through your child's school.

Your Parent Support Advisor is Liz Meese.



She is working with parents and carers in the following cluster of schools:

*Amblecote Primary
Gig Mill Primary
The Ridge Primary
Ridgewood High
St. James's Primary*

*Address: Stourbridge Children's and Family Centre,
Forge Road, Stourbridge DY8 1XF.*

Telephone: 07827 873273 or 01384 818780

Email: psa@rufford.dudley.sch.uk

or contact us through your child's school.

Your Parent Support Advisor is Lynn Ginns



She is working with parents and carers in the following cluster of schools:

*Greenfield Primary
Ham Dingle Primary
Oldswinford C. E. Primary
Oldswinford Hospital School
Pedmore C. of E Primary
Redhill School
St. Joseph's R.C. Primary*

*Address: Hob Green Children's Centre,
Hob Green Road, Stourbridge DY9 9EX*

Telephone: 07827 873272 or 01384 818783

Email: psa@rufford.dudley.sch.uk

or contact us through your child's school.